

# SNOW REMOVAL EQUIPMENT GUIDE

EXTENSIVE GUIDE TO THE BEST SNOW REMOVAL EQUIPMENT FOR YOUR BUSINESS



- BEST COMMERCIAL SNOW SHOVELS
- TOP COMMERCIAL SNOW BLOWERS
- TOP-OF-THE-LINE SNOW PLOWS
- BEST TRUCKS FOR SNOW REMOVAL
- TOP-RATED SNOW TIRES

Service **Autopilot**<sup>™</sup>  
by **xplor**

# GETTING YOUR EQUIPMENT READY FOR THE SEASON...



Begin equipment inspections at least two months before the start of the snow season. Remember, the earlier you start, the sooner you can address any potential issues.

## **Conduct visual inspections:**

- ❑ Check welded points for integrity
- ❑ Check hoses for corrosion or leaky seals
- ❑ Check plow edges for excess wear and tear
- ❑ Look for tiny patches of rust, then sand or file and touch up with enamel paint.

## **Then start on seasonal maintenance:**

- ❑ Clean electrical connections
- ❑ Tighten trip and return springs
- ❑ Flush and replace hydraulic fluids
- ❑ Test/charge batteries that were left sitting
- ❑ Re-torque fasteners (once plows are installed)

# COMMERCIAL SNOW SHOVELS



Proper **commercial snow shovels** limit the impact of shoveling on the body. Unlike traditional shovels homeowners use, a commercial shovel is designed with an ergonomic handle and lightweight materials.

Even though these commercial shovels have higher upfront cost, they'll save more money over time with fewer injuries, faster job times, and higher efficiency.

# BLADE SIZE AND SHAPE

## **30" Plow-style**

Best for pushing or scraping.



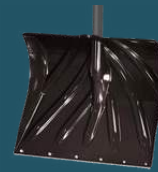
## **24" Plow-style**

Biggest for true shoveling, can do double-duty as a pusher. Good for shoveling powder.



## **18" Plow-style**

Best for shoveling packed, wet snow. A smaller, lighter shovel-load helps protect employees from trying to lift too much snow.



## **Aluminium**

It won't rust. Not really good for pushing or serious shoveling, good for breaking up big drifts or riding down a hill.



## **Square Nose**

Good for scraping frozen layers of snow off of sidewalks and driveways.



## **Round Nose**

Good for breaking up the frozen berm at the base of snow plow drifts.



## **Scraper**

When a square-nosed shovel can't break the ice, this smaller, blade-like shovel will do the trick.



# SHAFT AND HANDLE DESIGN



**Straight :** This is a traditional shaft that works well as a minimal usage shovel for pushing. Although, it's not ideal for lifting. Examples of straight shaft shovels include: 30" plow-style, square nose, round nose, scrapers, etc.).

**Gooseneck :** A gooseneck is a straight shaft, which curves like a gooseneck. It works well as a moderate-use tool. Though you can do some shoveling with it, the constant hunching over, pushing, and scooping makes this shaft hard on the wrists.

**Curved :** This is a shaft that curves in the middle. Its ergonomic design reduces hunching and back strain - making it the perfect heavy-use commercial snow shovel.

**D-Grip :** This grip is available on any of the shafts listed above. A d-grip allows the user's palm of their hand to absorb the shock of shoveling and provides greater control over the load of snow. For this reason, most ergonomic commercial snow shovels use a d-grip.

D-Grip



T-Grip



# SHOVEL MATERIALS

## WOOD

Heavy, commonly used in cheaper shovels.

## ALUMINIUM

It doesn't rust, it's lightweight, and it's rigid. However, it doesn't work well at pushing or serious shoveling. Although, it does work well at breaking up big drifts or riding down a hill. When using an aluminum-bladed shovel, watch out for scraping decks and other soft surfaces.

## PLASTIC

It's lightweight, but less rigid. Plastic blades are common in plow-style shovels and won't scratch or gouge softer surfaces.

## FIBERGLASS

Lightweight, rigid, and expensive. Fiberglass has less give than plastic and is lighter than metal - making it an ideal, more costly material for handles.

# THE BEST COMMERCIAL SNOW SHOVELS FOR YOUR BUSINESS

## True Temper 18 in. Ergonomic Mountain Mover

---

- It's lightweight at 3 pounds.
- Metal, curved handle with an oversized d-grip for gloved hands.
- The plastic blade features a nylon strip, which starts out flat and falls into a scoop for scooping.



## **Bully Tools 22 in. Combination Shovel With Fiberglass D-Grip**

---

- It is fiberglass, d-grip handle with no-slip texture is lightweight and designed to increase leverage and reduce fatigue.
- This lightweight, polypropylene (a tough, high-grade plastic) blade is durable and stress-tested - no more bending, breaking, or snapping!
- The thick, angled, scraping edge easily slides on the ground. Plus, it's gentle enough not to damage softer surfaces, such as decks, steps, or even concrete.





# THE BEST COMMERCIAL SNOW PUSHERS FOR YOUR BUSINESS



## TRUE TEMPER 24 IN. INDUSTRIAL GRADE SNOW PUSHER WITH VERSA GRIP

---

- Its nylon blade is wear-resistant and non-stick.
- Equipped with a strong steel handle coated in TPE resin for an anti-slip grip.
- The curved, plow shape blade design easily gathers, pushes, and removes snow and slush.
- The wide versa grip allows users to push with two hands for improved force and control.

## Bully Tools 24 in. Combination Shovel With Fiberglass D-Grip

- The thick, durable, 16-gauge steel blade easily glides across cement and ground to collect snow.
- The high-quality fiberglass handle is coated in a polyester veil to prevent splintering and increase strength.
- Its back support plate increases shovelhead strength and prevents breakage at what's typically the weakest part of the shovel.
- Its d-shaped polypropylene (a tough, high-grade plastic) is wide enough to accommodate gloved hands and has a no-slip texture designed to increase leverage and reduce fatigue.



## COMMERCIAL SNOW BLOWERS

Ultimately, the **best commercial snow blower** boils down to these main factors:

- Budget
- Snowfall in the area
- Sidewalk or driveway width



The best snow blowers for homeowners aren't necessarily the best ones for commercial use in businesses. For example, electric snow blowers aren't ideal for commercial use unless you live in an area receiving light snowfall. This is because it isn't powerful enough to drive through large drifts or deep, wet snow.

Likewise, a one-stage blower isn't ideal for businesses either. These snow blowers will struggle to push past any more than a foot of snow. Plus, it'll only work on pavement and won't work over terrain like gravel.

If your area gets anything more than moderate average amounts of snow, then you'll likely need to invest in a two-stage snow blower:

- Built to perform well in about two feet of heavy, wet snow
- Has the largest clearing width and will easily operate on hills and uneven areas
- Saves your back when powering through large drifts where you don't want to use a snow shovel

Although, if your area receives extreme, high volumes of snow, then you might want to consider a three-stage snow blower. Although, for the purposes of simplicity in this guide, we'll only feature the most commonly used two-stage commercial snow blower. However, you'll find that many of the brands featured in this guide also manufacture three-stage snow blowers.



# THE BEST COMMERCIAL SNOW BLOWERS FOR BUSINESSES

## Ariens Deluxe 28

- Clearing Width: 28 in
- Engine Displacement: 254cc
- Electric Start: yes
- Features:
  - Headlights
  - One-hand interlock
- Chute Controls: remote deflector control
- Weight: 249.8 lbs
- Speeds: 6 forward/2 reverse
- Throw: 50 ft
- Tons per Hour: 65
- Commercial Warranty:
  - Gears: 1 year
  - Product: 90 days



## Briggs and Stratton 1227MD

- Clearing Width: 27 in
- Engine Displacement: 250cc
- Electric Start: yes
- Features:
  - Headlights
  - Free hand control
- Chute Controls: DMC/remote
- Weight: 211 lbs
- Speeds: 5 forward/2 reverse
- Throw: Not specified by manufacturer.
- Tons per Hour: Not specified by manufacturer.
- Commercial Warranty:
  - Engine: 90 days
  - Equipment: 3 months
  - Battery: 12 months



## Honda HSS1332ATD

- Clearing Width: 32 in
- Engine Displacement: 389cc
- Electric Start: yes
- Features:
  - Headlights
  - Hydrostatic drive
- Chute Controls: remote electric joystick
- Weight: 276 lbs
- Speeds: manual customizable speed
- Throw: 56 ft
- Tons per Hour: 165
- Commercial Warranty: 3 years



## Husqvarna ST 230

- Clearing Width: 30 in
- Engine Displacement: 291cc
- Electric Start: yes
- Features:
  - Headlights
  - Heated handles
- Chute Controls: chute deflector
- Weight: 239 lbs
- Speeds: 6 forward/1 reverse
- Throw: Not specified by manufacturer.
- Tons per Hour: Not specified by manufacturer.
- Commercial Warranty: 1 year





### Troy-Bilt Arctic Storm 30

- Clearing Width: 30 in
- Engine Displacement: 357cc
- Electric Start: yes
- Features:
  - Headlights
  - Heated handles
- Chute Controls: one touch electric 4-way chute control
- Weight: 250 lbs
- Speeds: 6 forward/2 reverse
- Throw: Not specified by manufacturer.
- Tons per Hour: Not specified by manufacturer.
- Commercial Warranty: 5-year limited



# Commercial Snow Plows



Despite what you might think, finding the right **commercial snow plow** for your business isn't as complicated as it seems. In reality, there are only three factors you need to consider:

1. How much weight can your truck carry on the front axle?
2. What kind of plowing will you be doing (e.g. residential or commercial)?
3. What trade-off are you willing to accept when it comes to the blade's material?

## The Best Commercial Snow Plows for Your Business

Take a look at some of the most trusted commercial snow plow brands businesses currently use:

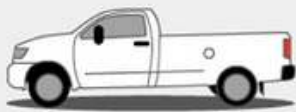
- **Boss**
- **Western**
- **SnowDogg**

# HOW MUCH PLOW CAN YOU HANDLE?

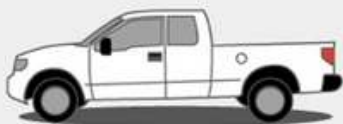
Find your truck's **GVWR** (i.e. Gross Vehicle Weight Rating). You should be able to find it by consulting your owner's manual or by completing a quick Google search.

Generally, a mid-sized pickup can carry a 6.5-foot to 7.5-foot plow. A 1/2-ton pickup can carry a 7-foot to 7.5-foot plow, and a 3/4-ton to 1-ton (or full-size) pickup can carry a 7.5-foot to 8-foot plow.

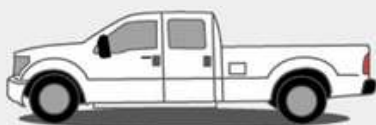
## Truck



Mid-sized



1/2 Ton Pickup



3/4 Ton Pickup

## Plow Size



6 - 7'



7 - 7<sup>1/2</sup>'



7<sup>1/2</sup> - 8'

# WHAT BLADE SHAPE WORKS BEST?

While there are a wide variety of blade shapes on the market, the two most common types for snow removal businesses are straight plows and v-plows.

Here's how to choose between a straight plow or v-plow:

## Residential Work: Straight Plow

- Easily clears driveways
- Requires minimal training
- More affordable option (it's less complicated to manufacture)



## Commercial Jobs, Complete Neighborhoods, and Roadways: V-Plow

- Less wear-and-tear during storms
- Efficient at breaking through heavy, built-up snow in large areas
- Requires more in-depth training (it's more complicated to operate)



# WHAT SHOULD YOUR PLOW BE MADE OF?

PIPlows are made from three different materials—each having their own strong pluses and drawbacks.

When choosing the right plow, you're weighing the added efficiency of snow not sticking to the plow against the fuel costs of a heavier plow. Although, it approaches a wash. After all, a plow covered in snow is also heavier than a dry plow, which sloughs off the snow.

## **Stainless Steel**

Providing a balance of strength with a non-stick texture, stainless steel is widely considered the most tried-and-true snow plow material. However, it's the most costly option.



## **CONS:**

- Generally more expensive

## **PROS:**

- Finer finish than regular steel.
- Less susceptible to rust and corrosion.
- Usually coated to help snow more easily slough off.

## Traditional Steel

Commonly considered the budget-friendly option, traditional steel is typically strong. However, it's not necessarily the most durable option. If the budget is not your primary concern, then this is probably not the right snow plow for your business.



### PROS:

- Effectively pushes snow
- Moderately less expensive than stainless or poly

### CONS:

- Needs to be replaced more frequently
- More susceptible to collecting frozen snow
- More likely to succumb to rust and corrosion

## Poly

Widely known for having a natural non-stick surface, poly (a form of durable plastic) plows have gained a popularity for being a slightly less expensive option to stainless steel.



### PROS:

- Slightly less expensive
- Don't have to be coated to slough off snow (they do it naturally)

### CONS:

- Plastic is weaker than steel
- Heavier than a similarly sized steel plow (due to reinforcing with steel frames)

# TRUCKS

There's a lot of debate as to which is the best truck for snow removal. Although, your budget and individual business needs will determine which is the best for your business.

While there are a great deal of factors to take into account, the main factors you want to consider are:

- Budget
- Horsepower (300 HP is a good goal)



Remember, gas mileage isn't as important for [snow trucks](#) because your primary concern is strength, efficiency, and reliability. Plus, the gas mileage estimates aren't accurate for snow removal due to the additional weight of the plow and snow.

However, whether you decide to purchase a new or used truck is largely dependent on your budget. If you decide to purchase a used truck, just be sure it wasn't previously used in another business. After all, trucks formerly used in businesses will likely have the most wear-and-tear - making them less reliable for your business.



# The Best Trucks to Push the Snow into Neat Berms

Take a look at some of the best trucks many snow removal businesses swear by:



## Ford F-250 Super Duty

Base MSRP: \$44,970+

Horsepower: 385-450

## Light-Duty Model: Ford F-150

Base MSRP: \$37,065

Horsepower: 290-450



## Chevy Silverado 2500-3500HD

Base MSRP: \$44,400+

Horsepower: 401-470



**Light-Duty Model: Chevy Silverado 1500**

**Base MSRP: \$36,800+**  
**Horsepower: 270-420**



**Dodge Ram 2500-3500**

**Base MSRP: \$45,250+**  
**Horsepower: 410**



**Light-Duty Model: Dodge Ram 1500**

**Base MSRP: \$40,275+**  
**Horsepower: 270-420**



**GMC Sierra 2500-3500HD**

**Base MSRP: \$46,300+**  
**Horsepower: 401-470**



**Light-Duty Model: GMC Sierra 1500**

**Base MSRP: \$37,700+**

**Horsepower: 277-420**



**Nissan Titan XD**

**Base MSRP: \$52,850+**

**Horsepower: 400**



**Light-Duty Model: Nissan Titan**

**Base MSRP: \$46,690+**

**Horsepower: 277-420**



# SNOW TIRES

Your budget and truck size (e.g. medium/heavy-duty truck or a light-duty truck) will largely impact which snow [snow tires](#) are right for your business.

Keep in mind, ALL winter tires used for snow plowing should have the [3PMSF](#) (i.e. Three-Peak Mountain Snowflake) symbol etched into the sidewall. This indicates the tire is acceptable to use in severe winter conditions.

# BEST SNOW TIRES FOR MEDIUM TO HEAVY-DUTY TRUCKS

## 1. Michelin X-Ice Snow

### Pros:

- Excellent snow traction
- Improves fuel efficiency
- Long-lasting winter tread
- 60-day satisfaction guarantee
- 40,000-mile treadwear warranty
- Excellent performance in freezing conditions
- Ranked with highest performing snow traction

### Cons:

- Some reviewers have reported:
  - Durability issues
  - Difficult maneuverability on ice





## 2. Bridgestone Blizzak W965

### Pros:

- Fuel efficient
- Long-lasting tread life
- Designed for winter, snow, and ice

### Cons:

- No treadwear warranty
- Some reviewers have reported:
  - Poor traction
  - Premature wear

## 3. Goodyear Winter Command LT

### Pros:

- Excellent snow traction
- Dry and wet performance
- Outstanding traction over ice and slush

### Cons:

- No treadwear warranty
- Some reviewers have reported:
  - Premature wear
  - Poor traction (especially on ice)





#### 4. Firestone Winterforce CV

**Pros:**

- 90 day buy and try
- Excellent snow traction
- Performs well on slush and ice
- Durable, commercial-grade tire
- Wet, snow, and ice performance

**Cons:**

- No treadwear warranty
- Some reviewers have reported:
  - Poor traction
  - Premature wear

# BEST SNOW TIRES FOR LIGHT-DUTY TRUCKS

## 1. Michelin Agilis CrossClimate

### Pros:

- Long tread life
- Reduce downtime
- Treadwear warranty
- Commercial durability
- Wet and snow traction

### Cons:

- Some reviewers have reported:
  - Issues with performance, design, and safety



## 2. Bridgestone Blizzak LT

### Pros:

- Fuel efficient
- Long tread life
- Winter, snow, and ice performance

### Cons:

- No treadwear warranty
- Some reviewers have reported:
  - Durability issues



# THE ULTIMATE SECRET WEAPON FOR YOUR SNOW REMOVAL BUSINESS

Buying the best snow removal equipment for your business is important. However, great equipment can only grow your business so far. The [#1 snow removal software](#) for your business has the power to [automate](#) and streamline your everyday business operations

When you choose [Service Autopilot](#), you'll gain access to:

- Flexible billing system
- Pre-built master routes
- [Same-day automated payments](#)
- Job management from anywhere
- Custom forms for estimates, pre-season visits, and more

See for yourself how Service Autopilot has the power to TRANSFORM your snow removal business into a long-lasting success.

[BOOK A DEMO](#)



Service **Autopilot**<sup>™</sup>  
by **xplor**